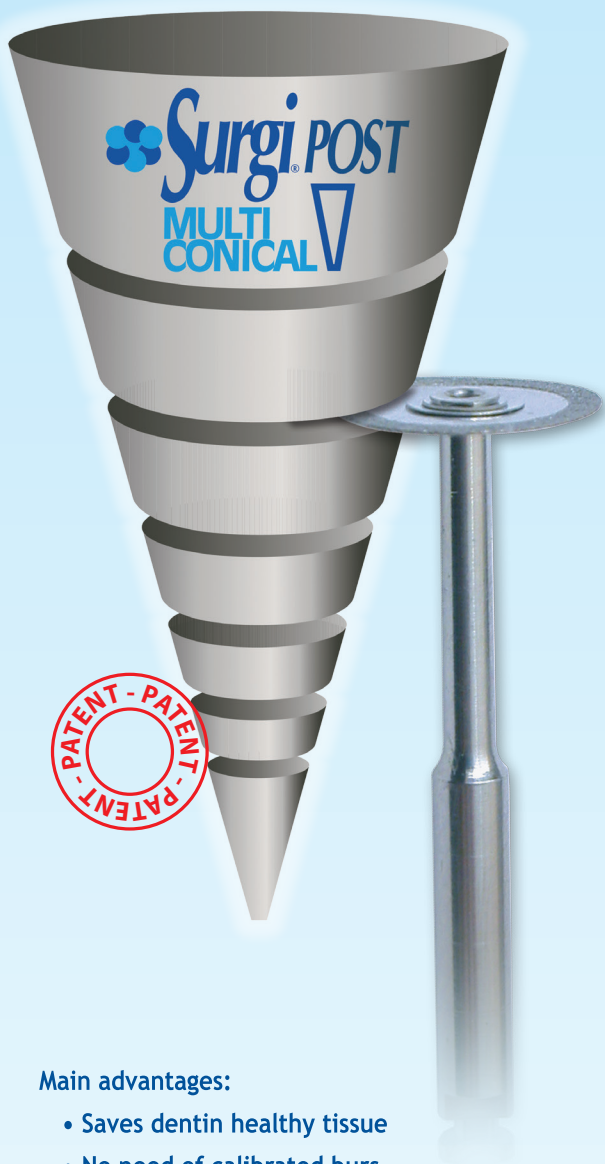


***Complete system
for Core Build Up
and Prosthetic
reconstruction***



Main advantages:

- Saves dentin healthy tissue
- No need of calibrated burs
- Possibility to conclude in one session canal therapy and core build up

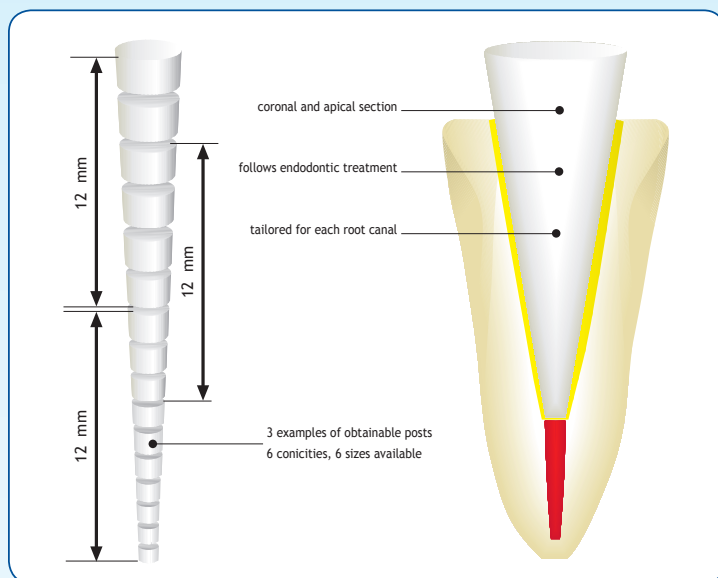
THE POST THAT ADAPTS TO THE ROOT

Patent nr. MI2006A000841 of 28/04/2006

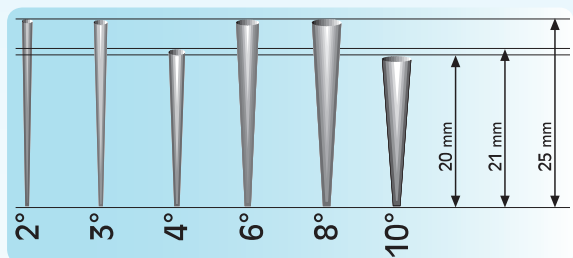
The endodontic post with regular conicity, SURGI POST MULTICONICAL respects the dentinal root tissue remaining integrity, base for a more secure, reliable and therefore more durable treatment.

Taking the advantage of the 6 different regular conicities (2° - 3° - 4° - 6° - 8° - 10°) and following the last step of the root canal endodontic preparation, it will be easily reached the individual clinical post adaptation. SURGI POST MULTICONICAL is available on carbon fibre or glass fibre, as their use will depend on the prosthetic project. The post clinical length will be determined gradually by dissecting the apical part with a specific separating disk.

The smaller sizes (2° - 3° - 4°) will be reserved for the "first intention" preparations and less invasive; the larger sizes (6° - 8° - 10°) satisfy any need such as to replace a previous post or natural access particularly wide.



SURGI POST MULTICONICAL - CARBON FIBER

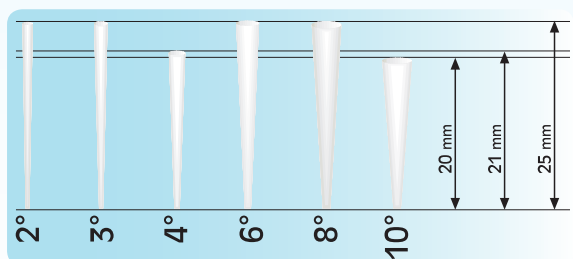


- Cod. MM218 - Conocitiy 2° - 12 pcs.
- Cod. MM219 - Conocitiy 3° - 12 pcs.
- Cod. MM220 - Conocitiy 4° - 12 pcs.
- Cod. MM221 - Conocitiy 6° - 12 pcs.
- Cod. MM222 - Conocitiy 8° - 12 pcs.
- Cod. MM223 - Conocitiy 10° - 12 pcs.

CE 0546



SURGI POST MULTICONICAL - GLASS FIBER



- Cod. MM211 - Conocitiy 2° - 12 pcs.
- Cod. MM212 - Conocitiy 3° - 12 pcs.
- Cod. MM213 - Conocitiy 4° - 12 pcs.
- Cod. MM214 - Conocitiy 6° - 12 pcs.
- Cod. MM215 - Conocitiy 8° - 12 pcs.
- Cod. MM216 - Conocitiy 10° - 12 pcs.

CE 0546



SURGI MIX:

- Cod. MM217 - Kit with posts of different conocities: 2° - 3° - 4° - 12 pcs. (4 pcs. each)



SURGI PRIMEBOND

Dual adhesive system for a double adhesive action to the dentin.

System adhesive for fiber post cementation and for core build up of endodontically treated teeth.

- Ideal base for the use of Surgi DUAL FLO' CORE, the first dual composite cement with chromatic change
- It is fixed in two different ways to the root canal dentin
- First strong bond with the inorganic part, integrating with the Calcium of the dentin
- Very high adhesive values (28 MPa)
- It lives well with the water present in the dentinal tubules because carried by ethanol
- Dual (self and light cure)

ADVANTAGES:

- Maximum adhesive values among the "SELF PRIMING SYSTEMS"
- Procedure for a quick and easy use
- It solves the adhesion problem between cement and dentin
- Maximum polymerization guarantee because "dual" (self- and light-)
- Double adhesive bond to dentin
- The carboxylic groups ensure a very strong and stable double bond
 - At Calcium Hydroxyapatite (inorganic part)
 - Nitrogen of collagen fibers (organic part)
- Maximum adhesion in wet conditions

Cod. MM400 - 1 bottle Surgi PRIMEBOND (6 ml) + 1 bottle Surgi PRIMEBOND ACTIVATOR (6 ml)



Surgi IRRIGATION SYSTEM

SURGI IRRIGATION SYSTEM, thanks to its comprehensive range of products is a complete system for surface and deep cleansing endodontium. The alternate use of three different irrigating solutions produces a viable decontamination of the root canal system.

FASE
1

Removal of smear layer



E.D.T.A. 17

The solution *Surgi E.D.T.A. 17* is a detergent solution to a neutral pH root canals, harmless for the periapical tissues, able to remove the smear layer, due to its chelating ability ions Ca^{2+} , which is formed on the bottom of the cavity and on the root canal walls as a result of the various operational procedures. The smear layer can occlude the entrances of the dentin tubules by preventing a correct cleansing and disinfection of the root canal, it can also encourage bacterial growth and decrease the effectiveness of dentin adhesives and the retention of cements used for fixing the endodontic posts.

To remove the inorganic root canal mud and organic debris, you need to follow the application of *E.D.T.A.* a washing with 5% sodium hypochlorite, or *Surgi HYPO 5*.

Cod. MM800 - 6 bottles of 50ml + instructions for use

FASE
2

Disintegrating properties toward organic compounds



HYPO 5

NaOCl is a chemical compound belonging to the chloro derivatives, long known both for its disintegrating properties toward organic compounds, including the necrotic pulp tissue and the organic components of the smear layer and of the bacterial residues. In water, sodium hypochlorite dissociates into sodium hydroxide and hypochlorous acid, according to the following reaction: $\text{NaOCl} + \text{H}_2\text{O} = \text{NaOH} + \text{HOCl}$ (sodium hydroxide) + HOCl (hypochlorous acid). Hypochlorous acid is the active part, capable of exerting the disintegrating activities. *Surgi HYPO 5* is the irrigant of choice for the removal during endodontic treatments of all the necrotic material from residues of any kind. For improved removal of bacterial residues, we recommend, before proceeding with normal endodontic techniques, additional washes with *Surgi CHX 0.3 + SC*. The characteristics of the solution will provide easier entry into the tubular system, favoring direct action in the neutralization of the bacterial flora and residual action by virtue of its ability to adhere to the inner surfaces of the dentin tubules.

Cod. MM801 - 6 bottles of 50ml + instructions for use

FASE
3

Cleaning and removal of bacterial residues of root canals



CHX 0.3 + SC

Surgi CHX 0.3 + SC is an aqueous solution with 0.3% chlorhexidine digluconate and cetrimide 0.2%, suitable for irrigation in endodontic root canal treatments, in the cleansing phase and removal of the bacterial residues of root canals. The increased efficacy of chlorhexidine in neutralizing the bacterial flora, less cytotoxicity against periapical tissues, the consequences of the accident modest injection of irrigating canal beyond the apex, enhance the use of CHX endodontic treatments. The surfactant presence Cetrimide (cationic surfactant), to decrease the surface tension of the solution, allows its easier entry into the tubular system in areas of difficult access to the tools (periapical areas), favoring direct action in the neutralization of the bacterial flora and residual action by virtue of its ability to adhere to the inner surfaces of the dentinal tubules even after the time of application (residual action).

The two active substances exert a synergistic action in the neutralization of the bacterial flora in the smear layer.

Cod. MM802 - 6 bottles of 50ml + instructions for use

Surgi® DUAL FLO' CORE

CE 0546



- 💧 Fiber post cementation and core build up
- 💧 Identical cutting resistance between dental structure and composite material
- 💧 Optimal mechanical properties

Microhybrid dual cure flowable composite for fiber post cementation and immediate core build up.

- ADVANTAGES:
- Dual curing
 - High compressive resistance
 - Easy to mold
 - Radiopaque
 - Tixotropic

WORKING TIME: 1,15 min

SETTING TIME (self-curing): 2,30 min

TECHNICAL PROPERTIES:

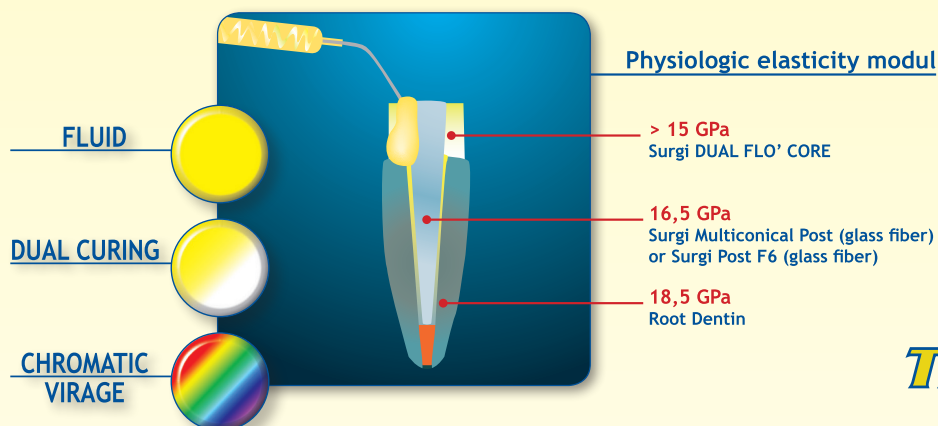
- Flexural strength: 150 MPa
- Barcol Hardness: 75
- Polymerization shrinkage (linear): < 0.8%

Cod. MM100 - Contains 1 cartridge 25ml (50g)

Cod. MM104 - Contains 1 cartridge 50ml (100g)



Cod. MM105 - Contains 1 syringe 5ml (10g) + 5 tips + 5 mixing cannulas



2001
The First
Dual Cure
Self Mixing Composite

CE 0546



For a visual control
of the margins



Surgi® DUAL FLO' CORE BLU

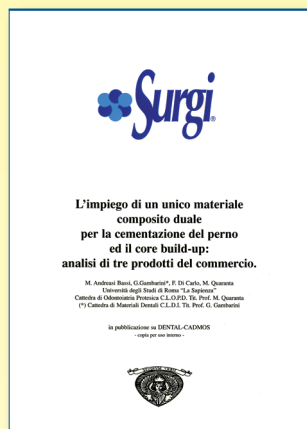
Microhybrid dual cure flowable blue composite for fiber post cementation and immediate core build up.

- ADVANTAGES:
- Dual curing
 - High compressive resistance
 - Easy to mold
 - Radiopaque
 - Tixotropic

Cod. MM101 - Contains 1 cartridge 25ml (50g)

- 💧 For an optimal contrast in sub-gingival preparations
- 💧 Identical cutting resistance between dental structure and composite material
- 💧 Optimal mechanical properties

Surgi Dual Flò Core can boast of numerous publications, national and international:



L'impiego di un unico materiale composito duale per la cementazione del perno ed il core build up: analisi di tre prodotti del commercio.

(The use of a unique dual curing composite material for cementation of fiber post and for core build-up: analysis of three trade products)

"Dental Cadmos" - May 2002

M. Andreasi Bassi, G. Gambarini, F. Di Carlo, M. Quaranta

Università degli Studi di Roma "La Sapienza"



SAPIENZA
UNIVERSITÀ DI ROMA

The concepts:

- Comparison with Luxacore A3 and Luxacore Blue.
- Reduced depth of Light Curing.
- No stress in the third medium of the root.



Valutazione delle proprietà meccaniche dell'interfaccia perno-cemento di un nuovo sistema di cementazione.

(An in vitro evaluation of the mechanical properties of the post-cement interface of a new product)

"DoctorOs" - January 2006

Davide Prisco, Rosa Fusco, Roberto De Santis, Luigi Ambrosio, Sandro Rengo

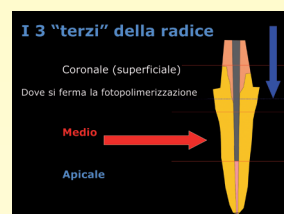
Università degli Studi di Napoli "Federico II"



UNIVERSITÀ DEGLI STUDI DI NAPOLI
FEDERICO II

The concepts:

- Verified the whole system - Posts - Adhesive System - Surgi Dual Flo' Core.
- The adhesion between Post-Material-Dentin is identical to that which is between Adhesive System and Composite.



Effect of different irrigating solutions and endodontic sealers on bond strength of the dentin-post interface with and without defects.

(Effetti di diverse soluzioni irriganti e sigillanti endodontici sul legame adesivo all'interfaccia dentina-perno con e senza difetti)

"International Journal of Medical Sciences" - 2012

Felice R. Grassi, Carmine Pappalettere, Mariasevera Di Comite, Massimo Corsalini,

Giorgio Mori, Andrea Ballini, Vito Crincoli, Francesco Pettini, Biagio Rapone, Antonio Boccaccio

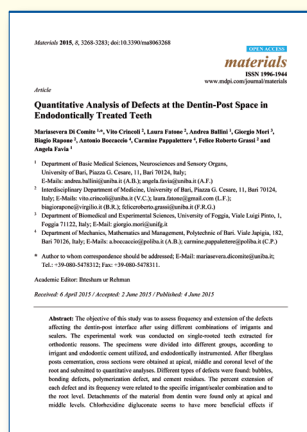
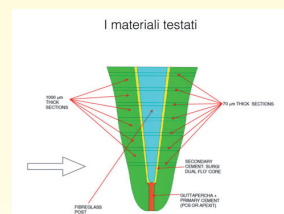
Università degli Studi di Bari "Aldo Moro"



UNIVERSITÀ
DEGLI STUDI DI BARI
ALDO MORO

The concepts:

- Verified defects frequency regarding the interface Dentin-Post, after using different combinations of irrigants and root canal sealers.



Quantitative analysis of defects at the dentin-post space in endodontically treated teeth.

(Analisi quantitativa dei difetti nello spazio fra dentina e perno in fibre in denti trattati endodonticamente)

"Materials" - 2015

Mariasevera Di Comite, Vito Crincoli, Laura Fatone, Andrea Ballini, Giorgio Mori,

Biagio Rapone, Antonio Boccaccio, Carmine Pappalettere, Felice Roberto Grassi, Angela Favia

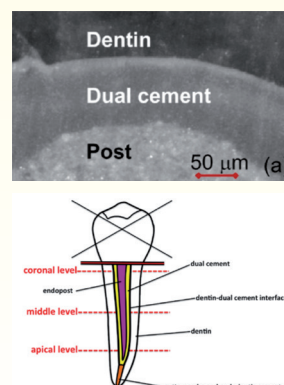
Università degli Studi di Bari "Aldo Moro"



UNIVERSITÀ
DEGLI STUDI DI BARI
ALDO MORO

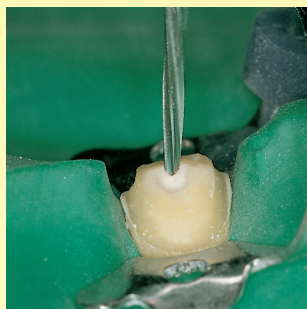
The concepts:

- NaOCl (Sodium hypochlorite): can cause dentin oxidation, inhibiting adhesion process of resin material to the dentin, inhibiting also the polymerization.
- CHX (Chlorhexidine): inhibits metal-protein matrix, enhancing the adhesion of luting composites to the dentin. Note: no investigation about E.D.T.A. 17% irrigant.
- Root canal sealers: it is easy to find residues causing defects/gaps between post and dentin, affecting the adhesive strength.





Operating protocol with Surgi Post Multiconical

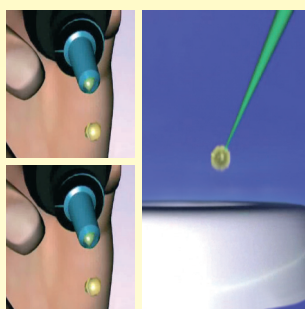


1. Isolate with rubber dam
2. Clean the root canal with a Gates Bur. Make sure there are no residues of endodontic cement and gutta-percha.
3. Choice of Surgi Post Multiconical
 - Place the transparent guide (Conocity Tracing System) to intraoral RX for a first check of choice.
 - Measure root canal depth with a periodontal probe.
 - Cut gradually the post starting from apical part, using Surgi Shaper disc, to obtain the primary stability.
 - Cut the post in clinical measure. Do not use a bur, especially with glass fiber posts.

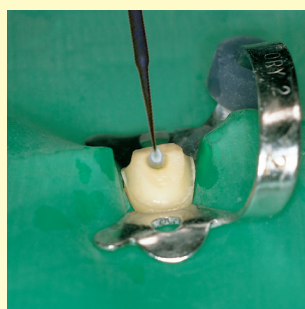


4. Etch the root canal with etching gel for 60 seconds. The opening of root canal dentin tubules is more complex than the opening of dentin tubules in a vital tooth.

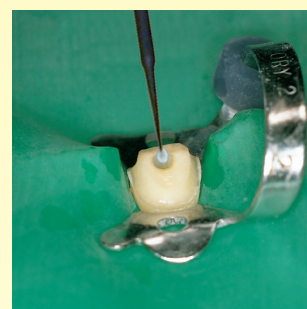
5. Wash, rinse and NOT dry. We recommend, after rinsing, to use saliva ejector to maintain a wet environment.



6. Mix 1 drop of Surgi Primebond Base + 1 drop of Surgi Primebond Activator in a mixing well (we recommend to use a Surgi Brush).

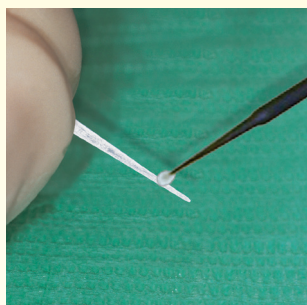


7. Apply a first layer of mixed Surgi Primebond Base and Activator into the root canal. Blow for 15 seconds to evaporate ethanol, then light cure for 20 seconds.

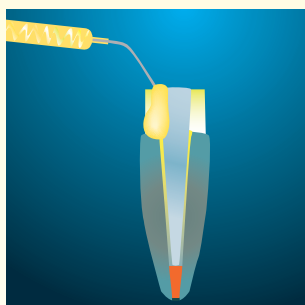


8. Apply a second layer of mixed dual curing Adhesive Surgi Primebond Base and Activator. If necessary, mix again 1 drop of Surgi Primebond Base + 1 drop pf Surgi Primebond Activator. Blow for 15 seconds to evaporate ethanol.

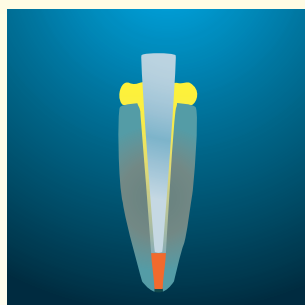
9. Do not light cure (the risk is to create thickness, lifting the post toward the coronal part).



10. Apply a layer of mixed adhesive also over the post Surgi Post Multiconical and light cure.



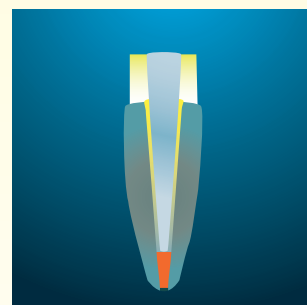
11. Extrude Surgi Dual Flo' Core onto the root canal, completely filling it. We recommend not to use a lentulo (the polymerization could be accelerated, reducing the working time).



12. Place the post, which will be "self-lentulo".

13. Leave the excesses and light cure for 40 seconds (halogen lamp) in order to stabilize the emerging part of the post.

14. If necessary use a metal matrix.



15. Complete the core build-up.
16. In emergency situations it is possible to complete the tooth restoration, if there an universal shade is accepted.



Clinical protocol of Surgi Dual Flo' Core with cylindrical glass fiber post Surgi Post F6



1) Temporary restoration on tooth 15 endodontically treated.



2) Isolation with rubber dam.



3) Removal of temporary restoration.



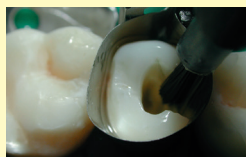
4) Dowel space preparation with Surgi Rota bur.



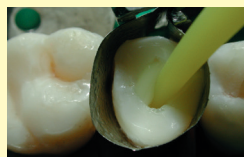
5) Application of metal matrix and wooden wedge.



6) Enamel/Dentin conditioning with etching el.



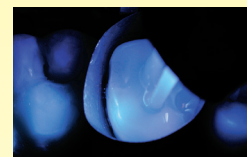
7) Application of Surgi Primebond Adhesive with a brush.



8) Direct application of Surgi Dual Flo' Core composite into the root canal.



9) Placement of 2 Glass Fiber Surgi Post F6 1.0 size.



10) Light curing of Surgi Dual Flo' Core.



11) Verifying color change of Surgi Dual Flo' Core.



12) Finish of restoration.



13) Restoration view once dismantled rubber dam before prosthetic phase.



14) Core build up isolated with Vaseline or silicone before relining of temporary crown.



15) Finished temporary crown.



Recovery as a temporary fixed prosthesis in existing pre therapeutic emergency

Dr. Ferdinando Stevenazzi - Dentist



1) Length verifying of Surgi Post RX 6 compared to preexisting prosthesis.



2) Etching and subsequent application of Surgi Primebond Adhesive.



3) Filling of element with Surgi Dual Flo' Core after isolation with Vaseline or silicone.



4) Placement of prosthesis.



5) Light curing 40 seconds of Surgi Dual Flo' Core at marginal level.



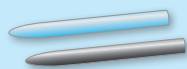
6) Removal of prosthesis.



7) Finishing of core build up.



8) Temporary cementation of prosthesis.



Traditional post and Bur



CE 0546

SURGI POST RX6 - CARBON FIBER POST

Radiopaque post made in carbon fiber for endodontic treatments.

Available sizes: Cod. MM201 - diameter 0.8 mm
Cod. MM202 - diameter 1.0 mm
Cod. MM203 - diameter 1.2 mm
Cod. MM204 - diameter 1.4 mm
Cod. MM205 - diameter 1.6 mm



CE 0546

SURGI POST F6 - GLASS FIBER POST

Radiopaque post made in glass fiber for endodontic treatments.

Available sizes: Cod. MM206 - diameter 0.8 mm
Cod. MM207 - diameter 1.0 mm
Cod. MM208 - diameter 1.2 mm
Cod. MM209 - diameter 1.4 mm
Cod. MM210 - diameter 1.6 mm

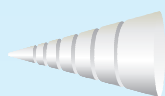


CE 0546

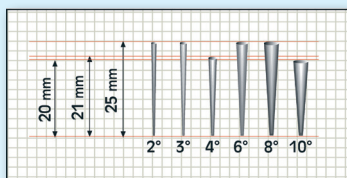
SURGI ROTA

Calibrated bur for a secure and precise working into the canal root.

Available sizes: Cod. MM230 - for posts of 0.8 mm diameter
Cod. MM232 - for posts of diameter 1.2 mm
Cod. MM233 - for posts of diameter 1.4 mm
Cod. MM234 - for posts of diameter 1.6 mm



Accessories for Surgi Post Multiconical



SURGI CONOCITY TRACING SYSTEM

Transparent guide for intraoral RX control.

Cod. MM714 - 1 pc.



SURGI SHAPER

Diamond disc to cut the apical and the coronal part of the post.

Cod. MM713 - 1 pc.



Accessories for Surgi Dual Flo' Core



DISPENSER MX

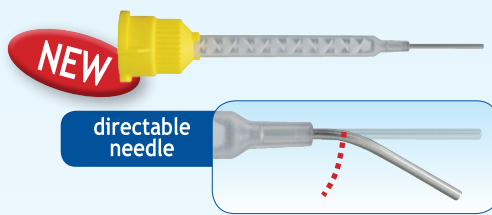
Dispenser for cartridge 50ml.

MM705 - 1 pc.

DISPENSER MX 2

Dispenser for cartridge 25ml.

MM706 - 1 pc.



MIXING CANNULAS WITH DIRECTABLE TERMINAL

The needle positioned at the end of cannula allows an easy application of the product.

MM704 - 25 pcs. pack



INTRAORAL NEEDLES

MM709 - 50 pcs. pack



INTRAORAL TIPS

MM708 - 50 pcs. pack



MIXING CANNULAS

MM707 - 50 pcs. pack



Corso San Gottardo, 54A - 6830 Chiasso - CH
Phone: +41 (0) 91 960 58 48 - Fax: +41 (0) 91 960 58 68
www.miromedgroup.ch - info@miromedgroup.ch

Distributor