



**Sutures studied
for the dental field**

SKD needles: high penetration and high flowability

The GOLD SERIES needles are with perfectly specular surface while the tips are produced under the control of a computer that checks and automatically discards not perfect needle points.

- PRODUCT RANGE WITH STEEL AISI 302 ENRICHED WITH NICKEL-CHROME
- EXCELLENT RESISTANCE TO BENDING AND BREAKING
- HIGH PENETRATION CAPACITY
- EXCELLENT SAFE AND ATTACK NEEDLE/THREAD
- HIGHER STABILITY IN NEEDLE HOLDERS DUE TO THE BODY

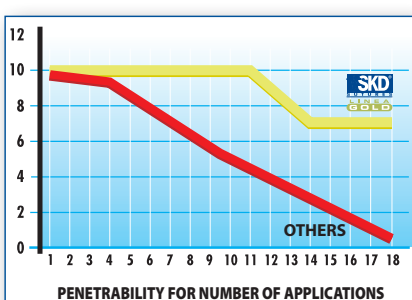
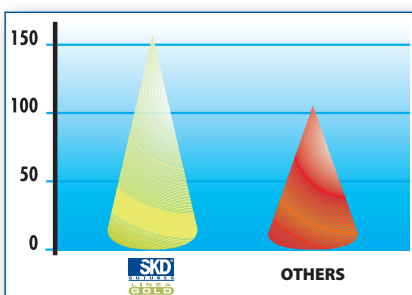
The choice of steel alloy, for the production of GOLD LINE surgical needles, envisages the use of AISI 302 SERIES stainless steel.

The advanced technology with which the needles are made of AISI 302 SERIES has allowed this line being used for years in the fields of plastic surgery, vascular and cardiac surgery.

All of GOLD LINE surgical threads are mounted with attachment drilled with Laser technology and the used needles are marked with the highest level of strength, ductility, and high penetration capability.

For these reasons the GOLD LINE guarantees the maximum of its performance of surgical wounds and of extended flaps with high degree of consistency. And thanks to non-traumatic needles, the GOLD LINE finds application in microsurgery and in periodontics.

Including this line, SKD® GOLD also offers to the more demanding dentist-surgeon a valuable tool to better face the surgical wound.

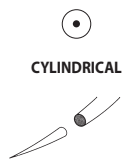


CLINICAL CASE
Dr. Valeria Chierichetti



Sutures studied for the dental field

The needle tips:



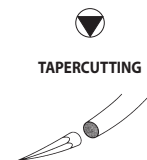
Circular tip and body flattened in the middle
For soft and easily penetrable tissues

PARTIAL THICKNESS FLAPS



Triangular section both in the point and in the body
For consistent tissues difficult to penetrate

FULL THICKNESS FLAPS

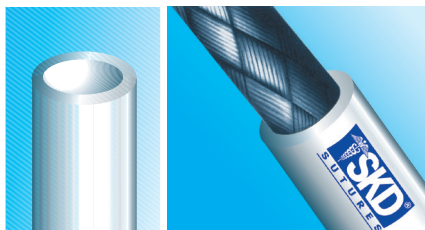


Triangular point and cylindrical body
For resistant and non resistant tissues
Used also in parodontology and for mucus gingival

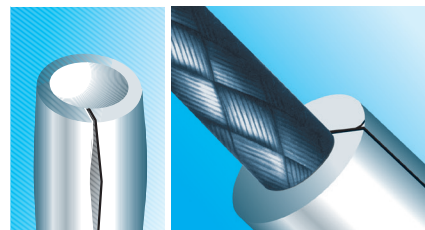
FULL AND PARTIAL THICKNESS FLAPS

The types of the needles:

Laser channel needles



Standard channel needles



The ideal length for the dental field:

45 cm = short

70 cm = long

60 cm = filo





SILK

Non-absorbable natural multifilament sterile surgical suture silicone-coated. Black colour.



CE
0546

SKD® SILK braided surgical suture is treated to make it compact and smooth.

SKD® SILK suture is permanently submitted to quality control to ensure it is non-capillary and has a perfectly uniform diameter.

It offers excellent tensile strength and knot holding capabilities, fulfilling with all international standards.

This tried and tested traditional suture product features excellent handling properties and is easy to knot. It is silicone-treated.

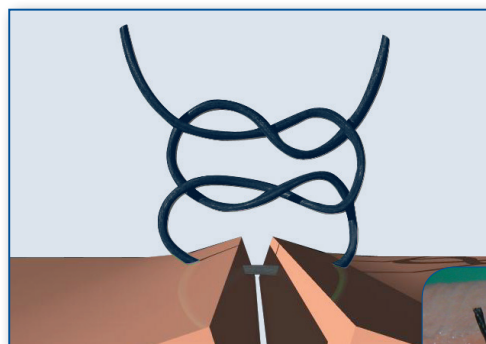
Box: 12 sutures

CYLINDRICAL	LENGHT.	COLOUR	6-0	5-0	4-0	3-0	2-0	U.S.P.
			0,7	1	1,5	2	3	
1/2 CIRCLE 20 mm	60 cm	black				KSG862		
1/2 CIRCLE 17,4 mm	60 cm	black				KSG872		

EXTERNAL CUTTING	LENGHT.	COLOUR	6-0	5-0	4-0	3-0	2-0	U.S.P.
			0,7	1	1,5	2	3	
1/2 CIRCLE 22,9 mm	60 cm	black					KSG643	
3/8 CIRCLE 18,7 mm	60 cm	black			KSG683	KSG684		

TAPERCUTTING	LENGHT.	COLOUR	6-0	5-0	4-0	3-0	2-0	U.S.P.
			0,7	1	1,5	2	3	
1/2 CIRCLE 17,4 mm	60 cm	black			KSG951	KSG952		

Recommended knot technique



Recommended knot: SQUARE

The square knot is made up of two similar half-knots, lying on the same level.

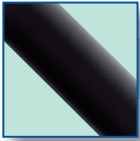
They are carried out as follows: first a throw clockwise, then a throw counter clockwise.

Tension applied to the ears of the knot increases its strength.

Recommended ears length

Ears' length (2-3 mm) is proportional to the coefficient of friction and to SKD® SILK flexibility.





MONO

Synthetic monofilament nylon polyamide - non resorbable. Black colour.



CE
0546

SKD® MONO is a synthetic nylon monofilament suture whose main features are strength, excellent knot holding and minimal tissue reaction.

The suture is smooth and handles easily, and its diameter is highly uniform, making it ideal for applications in dental surgery.

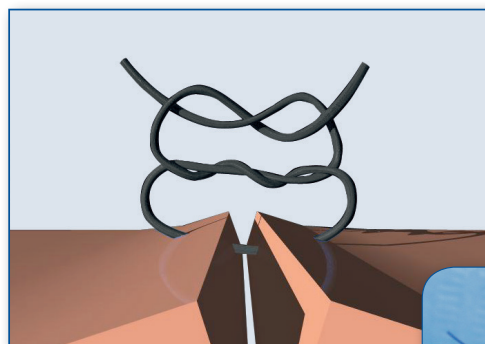
Box: 12 sutures

CYLINDRICAL	LENGHT.	COLOUR	7-0	6-0	5-0	4-0	3-0	U.S.P.
			0,5	0,7	1	1,5	2	
1/2 CIRCLE 17,4 mm	60 cm	black				KMG214		

EXTERNAL CUTTING	LENGHT.	COLOUR	7-0	6-0	5-0	4-0	3-0	U.S.P.
			0,5	0,7	1	1,5	2	
3/8 CIRCLE 16,2 mm	60 cm	black			KMG650			
3/8 CIRCLE 18,7 mm	60 cm	black				KMG662		

TAPERCUTTING	LENGHT.	COLOUR	7-0	6-0	5-0	4-0	3-0	U.S.P.
			0,5	0,7	1	1,5	2	
1/2 CIRCLE 17,4 mm	60 cm	black			KMG990			

Recommended knot technique

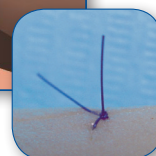


**Recommended knot:
SURGEON'S COMPLETE KNOT**

It is carried out as follows: an initial double-wrap throw followed by a single throw. This knot is not likely to be loosed and with no doubt it is the best of synthetic sutures.

Recommended ears length

Ears' length (10 mm) is proportional to the coefficient of friction and to SKD® MONO flexibility.





CE
0546

POLY

Non-absorbable synthetic multifilament sterile surgical suture. Green colour.

SKD® POLY is a pre-stabilized braided polyester suture.

Advances in braided polyester pre-stabilization technology have led to the production of a more even and consistent thread, with an increase in the number and density of filaments per meter.

The thread is treated with D&C Green n°6, in conformity with FDA (USA) and European Official Pharmacopoeia. It is silicone-treated.

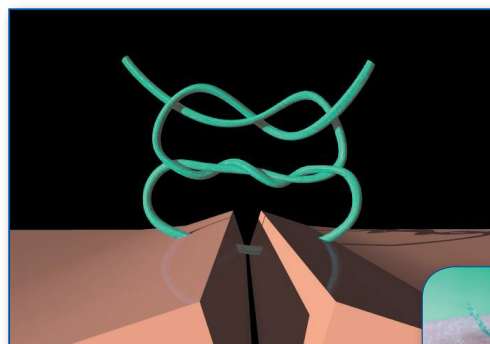
Box: 12 sutures

CYLINDRICAL	LENGHT.	COLOUR	7-0	6-0	5-0	4-0	3-0	U.S.P.
			0,5	0,7	1	1,5	2	
1/2 CIRCLE 21,8 mm	60 cm	green					KPG892	
1/2 CIRCLE 17,4 mm	60 cm	green				KPG871		

EXTERNAL CUTTING	LENGHT.	COLOUR	7-0	6-0	5-0	4-0	3-0	U.S.P.
			0,5	0,7	1	1,5	2	
3/8 CIRCLE 18,7 mm	60 cm	green					KPG663	
3/8 CIRCLE 16,2 mm	60 cm	green				KPG651		

TAPERCUTTING	LENGHT.	COLOUR	7-0	6-0	5-0	4-0	3-0	U.S.P.
			0,5	0,7	1	1,5	2	
1/2 CIRCLE 17,4 mm	60 cm	green			KPG953	KPG951		
3/8 CIRCLE 17 mm	60 cm	green					KPG952	

Recommended knot technique



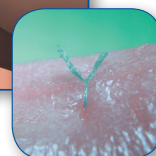
Recommended knot:
SURGEON'S COMPLETE KNOT

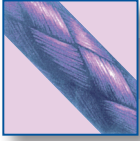
It is carried out as follows: an initial double-wrap throw followed by a single throw.

This knot is not likely to be loosened and with no doubt it is the best of synthetic sutures.

Recommended ears length

Ears' length (2-3 mm) is proportional to the coefficient of friction and to SKD® POLY flexibility.





ASSORB

Absorbable synthetic plurifilament sterile surgical suture. Violet colour.



SKD® ASSORB is an absorbable braided suture, synthetic and made of several plaited filaments in a polymer form of glycolic acid, offering greater pliability and easier handling than absorbable monofilament sutures.

A sheath has been added in order to make the braided filaments smoother and less traumatic.

The thread is dyed with D&C violet n°2 and is conform to the European Pharmacopoeia for absorbable braided sterile sutures.

Tension resistance lasts till the 21st day.

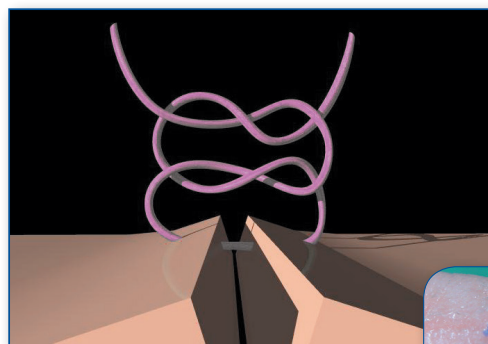
The complete absorption is reached between 60 and 90 days from the implant.

Box: 6 sutures

CYLINDRICAL	LENGHT.	COLOUR	6-0	5-0	4-0	3-0	2-0	U.S.P.
			0,7	1	1,5	2	3	
1/2 CIRCLE 17 mm	60 cm	violet			KAG871/6			

TAPERCUTTING	LENGHT.	COLOUR	6-0	5-0	4-0	3-0	2-0	U.S.P.
			0,7	1	1,5	2	3	
1/2 CIRCLE 17,4 mm	60 cm	violet		KAG950/6				
3/8 CIRCLE 13 mm	60 cm	violet		KAG931/6				
3/8 CIRCLE 19 mm	60 cm	violet			KAG971/6	KAG972/6		

Recommended knot technique



Recommended knot:
SQUARE

The square knot is made up of two similar half-knots, lying on the same level.

They are carried out as follows: first a throw clockwise, then a throw counter clockwise.

Tension applied to the ears of the knot increases its strength.

Recommended ears length

Ears' length (3-4 mm) is proportional to the coefficient of friction and to SKD® ASSORB flexibility.





Corso San Gottardo, 54A - 6830 Chiasso - CH
Phone: +41 (0) 91 960 58 48 - Fax: +41 (0) 91 960 58 68
www.miromedgroup.ch - info@miromedgroup.ch

Distributor